



## Yuasa Ficha Técnica

### Yuasa 6N2-2A - Convencional 6 Volt Batería

#### Rendimiento

Tensión	6
Capacidad (10-hour)	2Ah
Capacidad (20 horas)	2.1Ah

#### Dimensiones (±2mm)

Largo	70mm
Ancho	47mm
Alto	96mm

#### Peso

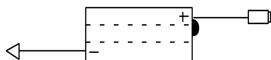
Peso con Acido	0.5kg
Volumen de acido	0.1l

#### Tecnología

Tecnología	Placa Sb/Sb
Separadores	Reinforcing fiber+Glass Fiber



#### Esquema



Fecha de emisión: 25/05/2025 - E&EO



## Yuasa Technical Data Sheet

### Yuasa 6N2-2A - Conventional 6 Volt Battery

#### Performance

Voltage	6
Capacity (10-hour)	2Ah
Capacity (20-hour)	2.1Ah

#### Dimensions (±2mm)

Length	70mm
Width	47mm
Height	96mm

#### Weights & Measures

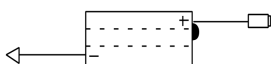
Mean Weight with Acid	0.5kg
Acid Volume	0.1l

#### Technology

Technology	Cast Sb/Sb
Separator	Reinforcing fiber+Glass Fiber



#### Cell Assembly Layout



Data Sheet generated on 25/05/2025 – E&OE